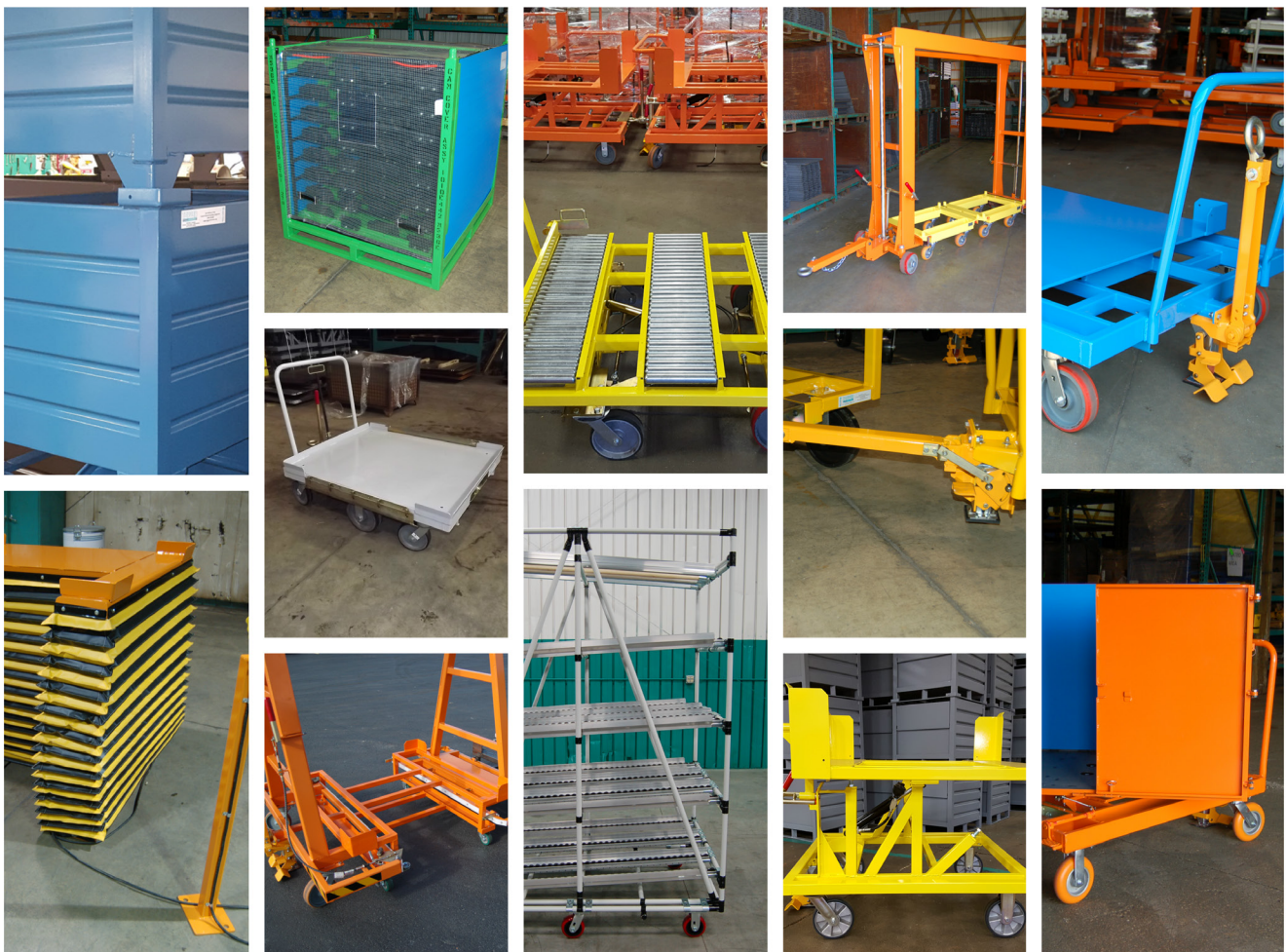


MATERIAL HANDLING SOLUTIONS

www.topperindustrial.com

The best single source company that will **DESIGN** & **BUILD** for all of your material handling equipment.



"Keeping Your Material Moving."

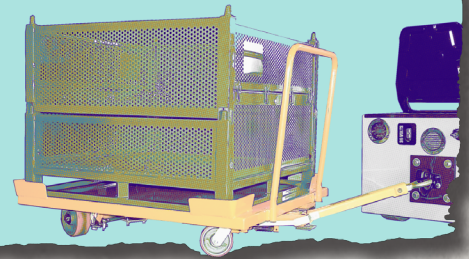
CUSTOM-BUILT

Topper Industrial is a leading manufacturer of material handling equipment and a pioneer in fork truck free cart delivery in North America.

Topper Industrial specializes in engineered to order material handling products, such as Industrial Carts (Mother / Daughter Cart Systems, Quad Steer Carts or Tracking Carts, Specialized Delivery Carts, Transfer Carts with Roller Deck, Static Carts, Rotation Carts, Tilt Carts or Kitting Carts), Industrial Cart Components (Parts Department), Industrial Containers (Corrugated & Wire Mesh Containers), Pallets, Cart Lift/Tilt Systems, Racking and Tube and Joint.

To find more pictures and videos of product applications,
please visit

www.topperindustrial.com



Industrial Carts

STATIC CARTS



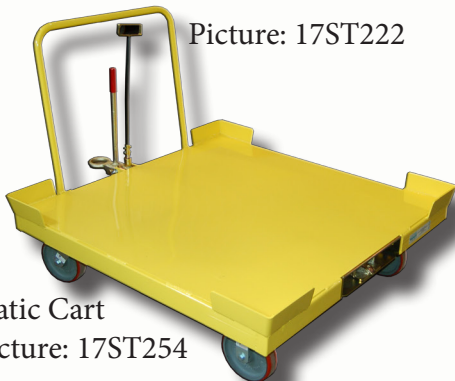
Static Cart w Container
Picture: 17ST222



Special Feature: Elevated
Wood Deck
Picture: 17ST223



Special Feature: Low Boy
Design
Picture: 17ST224



Static Cart
Picture: 17ST254



Special Feature: Fixed Tilt Cart
Picture: 17ST225



Static Cart
Picture: 17ST226



QUAD STEER CARTS



Quad Steer Cart
Picture: 17QS227



Special Feature: QS w Shelves
Picture: 17QS228



Quad Steer Cart
Picture: 17QS229



Special Feature: QS w Railings
Picture: 17QS230



Special Feature: QS w Shelves
& Compartments Picture: 17QS231

Elevated Quad Steer Cart
Picture: 17QS232



TILT CARTS

Special Feature:
Multiple Angle Tilt
Picture: 17TC 233



Special Feature:
Low Boy Tilt
Picture: 17TC234



Special Feature:
SideTilt
Picture: 17TC235



Tilt Cart
Picture: 17TC236



Special Feature:
Low Boy Tilt
Picture: 17TC237



Tilt Cart
Picture: 17TC238

Most Topper products are engineered to order!



ROTATE CARTS

Rotate Cart
Picture: 17RC239



Rotate Cart
Picture: 17RC240



Rotate Cart
Picture: 17RC241



Rotate Cart
Picture: 17RC242



Special Feature: w Extendable
Handle Picture: 17RC243



Rotate Cart
Picture: 17RC244



Topper can design and build to your exact needs!

TRANSFER CARTS



Transfer Cart
Picture: 17TRC245



Special Feature: Quad Steering
Picture: 17TRC246



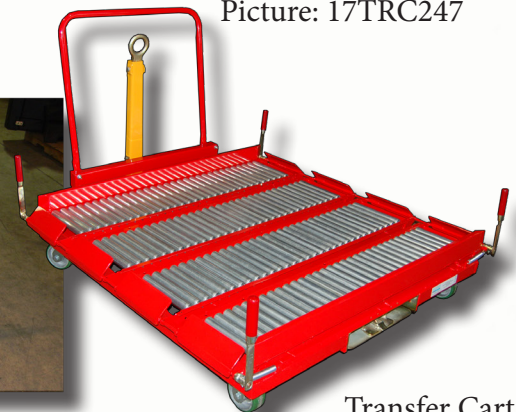
Transfer Cart
Picture: 17TRC247



Transfer Cart
Picture: 17TRC248



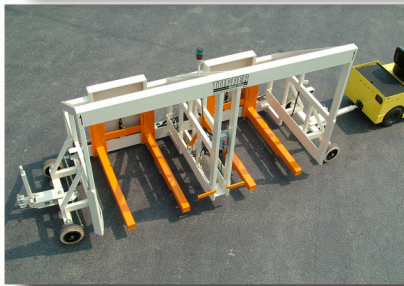
Transfer Cart
Picture: 17TRC249



Transfer Cart
Picture: 17TRC250



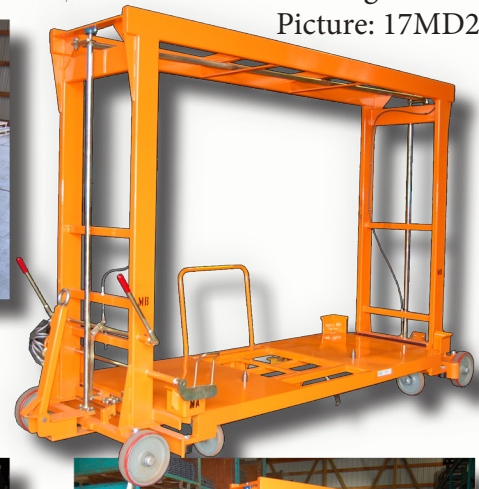
MOTHER DAUGHTER CART SYSTEMS



Lifting Mother Cart
Picture: 17MD251



Corral Cart
Picture: 17MD252



Pass Through Mother Cart
Picture: 17MD253



Pass Through Mother Cart
Picture: 17MD200



Ride On Corral Cart
Picture: 17MD202



Pass Through Mother Cart
Picture: 17MD198



Pass Through Mother Cart
Picture: 17MD256



Pass Through Mother Cart
Picture: 17MD257



Corral Cart
Picture: 17MD258



Pass Through Mother Cart
Picture: 17MD259



Pass Through Mother Cart
Picture: 17MD201



Ride On Mother Cart
Picture: 17MD260

For more product photos and video applications,
visit www.topperindustrial.com. Content added weekly.



Why the Industry is moving towards FORK TRUCK FREE Cart Delivery Systems?

Fork Truck Free (FTF) means to use minimal to no fork trucks in the movement of material throughout a plant floor. Fork Truck Free Cart Delivery is the use of industrial cart systems to move material as an alternative to the use of and dependency on fork trucks. Though it is a very thorough, thought-out process to convert material movement to Fork Truck Free, it is becoming a significant industry trend. This is due to the many benefits that result from implementing Fork Truck Free applications with cart delivery.

For more information on the benefits of Fork Truck Free applications, please visit

www.forktruckfree.com.

UNIQUE CARTS



Rotate Quad Steer
Picture: 17UC261



Bi-Directional Cart
Picture: 17UC262



Low Boy Bi-Directional Cart
Picture: 17UC263



Tuggable Self Dumper Cart
Picture: 17UC264



Quad Steer w Drop Gates
Picture: 17UC265



Rotate Fixed Tilt Cart
Picture: 17UC266



Cart Components

COMMON TOW PACKAGES



Tip-Down Plate Ring Tow Pack.
Picture: 17CP01



Retractable Pintle Ring Tow Pack.
Picture: 17CP02



Tip-Down Pintle Ring Tow Pack.
Picture: 17CP03

UNIQUE HITCHES/ COUPLERS



Hand Operated Easy
Release & HD Ring
Picture: 17CP16



Pin & Clevis
Picture: 17CP17



Pintle Ring & Coupler
Picture: 17CP20



Ball Hitch
Picture: 17CP21

SERVICES OFFERED

Many of Topper Industrial's products are engineered to order.

Topper Industrial's staff is eager to help create solutions to your material flow problems.

Contact us today at sales@topperindustrial.com.

Topper Industrial designs all products with ergonomics in mind, focusing on ease of use and best positioning of material to get the job done.

Topper Industrial's Services include, but are not limited to:



**Design & Customization
Manufacturing & Production**

COMMON HITCHES/ COUPLERS



Recessed Coupler
Picture: 17CP05



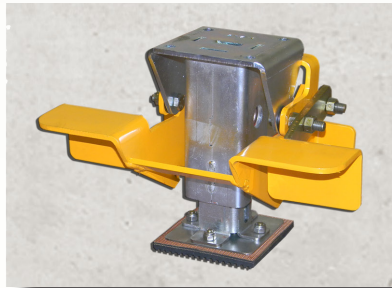
Pintle Coupler
Picture: 17CP04

From manufacturing the entire cart to just its components, Topper can help with ALL your industrial cart needs.

COMMON BRAKES



Cast Iron Floor Brake
Picture: 17CP07



Standard Floor Brake
Picture: 17CP06



Light Capacity Floor Brake
Picture: 17CP22

Contact sales@topperindustrial.com with any questions about any Topper Products.

COMMON WHEELS/ CASTERS



Pneumatic Foam Filled
Picture: 17SP10



Solid Rubber
Picture: 17SP11



Poly Mold-On Steel
Picture: 17SP12



HD Press-On Rubber
Picture: 17SP13



Light Duty Swivel &
Rigid Poly Mold-On
Picture: SP23



Swivel & Rigid Poly
Mold-On
Picture: 17SP15



Topper RS Caster
Swivel
Picture 17SP16



Topper RS Caster
Rigid
Picture: 17SP17

Tube & Joint



Table
Picture: 17TT01



Gravity Flow Rack
Picture: 17TT02



Janitor Stand
Picture: 17TT03



Bulk Material
Picture: 17TT04



Kit Cart
Picture: 17TT05



Work Screen
Picture: 17TT06



Shelf Cart
Picture: 17TT07

Topper Industrial has their own division of tube and joint.
Creating endless material handling equipment manufacturing capabilities.

Get to know Topper Tube!

What is Tube and Joint?

Tube and joint is an extremely useful, simple to use and very flexible system of steel tubing, metal connecting joints, roller conveyor, feet, casters and accessories. These universally compatible components are designed to create multiple material handling solutions.

From storage racks to first in-first out inventory processes, each creation is easily built and give users numerous solutions to many diverse applications. Each solution is easy to assemble and completely reusable.

Find more information and component list at www.toppertube.com.



Containers / Pallets

STANDARD CONTAINERS & PALLETS



51 Series Corrugated
Container



51 Series Corrugated
Container & Drop Gate



51 Series Corrugated
Container & Hopper Front



51 Series Corrugated
Container & Lifting Lugs

Contact sales@topperindustrial.com for any of your
standard or custom container requirements.
Topper can help with ALL your material handling equipment needs.



SP4248 Open Hat
Pallet

CUSTOM CONTAINERS & PALLETS



Pallet
Picture: 17CM59



Three Sided Bin
Picture: 17CM60



Container w Remove-
able Side Pict:17CM78



Cont. w Lifting Lugs & Skid
Bars Picture: 17CM62



Custom Liquid Tight w Fork
Tubes Pict: 17CM63



Custom Liquid Tight w
Scrap Bins Picture: 17CM64



Custom Smooth
Containers Picture: 17CM65



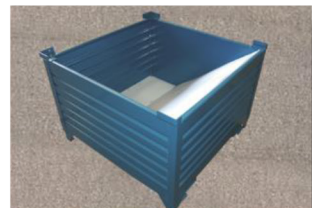
Custom Enclosed
Container Picture: 17CM66



Custom Wire Mesh
Container
Picture: CM79



Custom Container
Picture: 17CM68



Custom Container
w Funnel Insert
Picture: 17CM69



Small Parts Bin
Picture: 17CM70

Industrial Cart Lift / Tilts



Double Lift & Rotate
Picture: 17LT18



Roll On Tilter
Picture: 17LT19



Cart Tilter
Picture: 17LT20



Cart Tilter
Picture: 17LT21



Bulk Lift Table
Picture: 17LT22



Small Cart Lift
Picture: 17LT23

Racks



Engine Rack
Picture: 17CM37



Dunnage Rack
Picture: 17CM17



Collapsible Rack
Picture: 17CM72



Horizontal Panel Rack
Picture: 17CM06



Tube Rack
Picture: 17CM73



Bag Rack w Swivel Casters
Picture: 17CM36



800-529-0909

#cartdelivery #toppercarts

#forktruckfree



sales@topperindustrial.com



twitter.com/TopperInd



facebook.com/TopperIndustrial



youtube.com/IndustrialCarts



Topper Industrial is the **BEST** single source company that will **design and build** for all your material handling equipment needs.



Topper Industrial - Material Handling Solutions
1729 NE Frontage Rd., Sturtevant, WI 53177

(P) 262-886-6931 (F) 262-886-9569
sales@topperindustrial.com

www.topperindustrial.com / www.forktruckfree.com / www.toppertube.com