



TOPPER

INDUSTRIAL

MATERIAL HANDLING CARTS & EQUIPMENT

www.topperindustrial.com

@2023 TS

WHAT IS A STATIC CART?

A standard industrial cart with a rigid fixed deck that can be pushed or tugged.



CT26431

** Static Carts track in a straight line.

** Static Carts can be towed in multiples

4 Wheel Design - 2 rigid and 2 swivel casters.

4 Whl Static Carts carries lighter loads.

4 Whl Static Carts have wider turn radius.

6 Wheel Design - 2 rigid and 4 swivel casters.

6 Whl Static Carts can be used as single push cart.

6 Whl Static Carts have higher load capacity.

6 Whl Static Carts track well when towed.

6 Whl Static Carts have optimal maneuverability.

WHAT IS A QUAD STEER CART?

A Quad Steer Cart is an industrial delivery cart equipped with four wheel steering.



CT24257

Four wheel steering allows carts to track smoothly when being pulled with multiple carts in tow. By design, they track extremely well and handle tight turn radius.

Quad Steer Carts are often used to deliver and pickup material from a specific route along the factory floor. The Quad Steer Cart can remain attached to a vehicle with multiples in tow. There is no need for uncoupling during delivery & pick up applications.

WHAT IS A ROTATE CART?

A static cart base with a rotating top. The rotating top rotates 360 degrees to various work stations. The operator is able to rotate the unit by releasing the foot actuated detent to rotate and access parts from any side from one position.



CT22218

The detents automatically locks every 90° or 180°. This secures the rotation top, so that the operator can work out of the unit safely. The effortless rotation is due to the heavy duty sealed precision slew bearing that can handle cantilevered loads with ease and is virtually maintenance free.

WHAT IS A MOTHER CART?

A Mother Daughter Cart System is pulled by a tugger or tugging vehicle.

The system consists of one large mother frame cart and two or more, smaller daughter delivery carts. The daughter carts are designed to fit within the mother cart's frame work.

Once the daughter carts are locked inside, the mother and daughter carts are then able to be tugged as one.

This Mother Cart Delivery System is very versatile. The Daughter Carts can be all different types and sizes and utilize the same Mother Cart framework.



WHAT IS A TILT CART?

A Tilt Cart is a rugged industrial cart consisting of a unique upper frame that is designed to fit a specific container and tilt to a desired angle.

Topper Industrial's tilt carts come equipped with a patented adjustable closed loop hydraulic cylinder that controls the energy of the load as it is tilted.

It provides for a safe and controlled tilt movement in a full to empty application. The most common requested degree of tilt is 30, 45 and 60 degrees, but the carts can be custom designed to virtually any angle.



SERVICES OFFERED

Topper Industrial specializes in services to Manufacturing, Fulfillment, Warehousing & Distribution Sectors.

Topper Industrial's Services include, but are not limited to:
Design & Customization
Manufacturing & Production

sales@topperindustrial.com



2

CART COMPONENTS

TOW PACKAGES

3

A13148-125



CT23767



A19113-150



CT32530



A40422-150



A17627-150



CT18737



HITCHES/COUPLERS



A23992-002



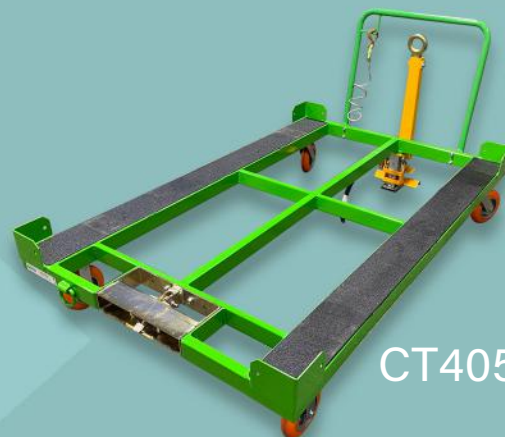
A28413-006



PH-5



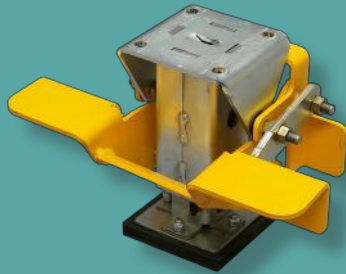
A12441-002



CT40597

CART COMPONENTS

BRAKES



A12441-005



P23026-218



A28322-801

WHEELS/CASTERS



A26152-82R



A26152-82S



A29000-082R ESD



A29000-082S ESD



A29000-082R



A29000-082S



A30156-82R



A30156-82S



A12309-000W



A18838-227W



A24321-164W



A29000-123W

BEARING



P13148-200

TILT CYLINDER



A17857-100

sales@topperindustrial.com

Topper specializes in the complete design, build & fabrication of custom material handling carts and cart components.

CONTAINERS



Topper Containers are corrugated steel containers.

Topper Containers are offered in many different sizes and standard options.

The standard nominal inside heights are 18" & 24."

Available add-on options:

- Drop Gate
- Fixed Hopper Front
- Lifting/Crane Lugs
- Fork Stirrups
- Angle Runners
- Fork Tubes



Paint Colors Available:

Blue, Gray, Black, Green and Teal

www.topperindustrial.com

5

PALLETS

Topper Pallets are a great alternative to plastic pallets. Topper steel pallets offer the most for higher load capacities and fire resistance.

Steel pallets can be loaded on rack beams & can be stacked for storage when not in use.

SP4248



CART LIFTS/TILTS

Topper Cart Lifts position the pallet at an ideal height for the operator.

Cart Lifts are available in pneumatic & electric hydraulic power. Additional design options:

- lift tilts and lift tables.

CT41411

The lifts are able to be loaded by fork truck, crane, conveyor and by cart.

When utilizing cart load, the lift tables elevate the cart with the product on it.

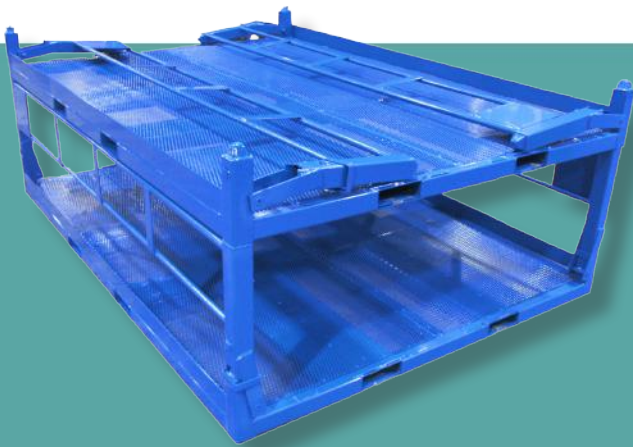
CT41414



Additional safety options:

- Safety skirts
- Light indicators if needed
- Hand or foot controls
- Safety colors available

CUSTOM EQUIPMENT APPLICATIONS



Topper Industrial designs and builds all the equipment needed to move material and deliver it line side.

Topper Industrial's reputation is built on honest, hardworking and reliable workmanship.

sales@topperindustrial.com

6



MATERIAL HANDLING EQUIPMENT

www.topperindustrial.com



Topper Industrial has a great team of people working hard each day to create the most reliable and innovative material handling products. Combined with over 40 years of experience in the material handling industry, Topper's team of highly skilled engineers, designers and staff are able to design & manufacture **Industrial Carts** (Mother Daughter Cart Systems, Quad Steer Carts or Tracking Carts, Specialized Tugger Carts, Transfer Carts with Roller Deck, Static Carts, Rotation Carts, Tilt Carts or Kitting Carts), **Industrial Cart Components** (Cart Tow Bars, Couplers/ Hitches, Brakes, Etc.), **Industrial Containers** (Corrugated Steel), **Pallets**, **Lift/Tilt Systems**, and **Racking**.

sales@topperindustrial.com

"Keeping your material moving."



facebook.com/TopperIndustrial



youtube.com/IndustrialCarts

1729 NE Frontage Rd., Sturtevant, WI 53177

800-529-0909